



DIN 1445 T Bolts

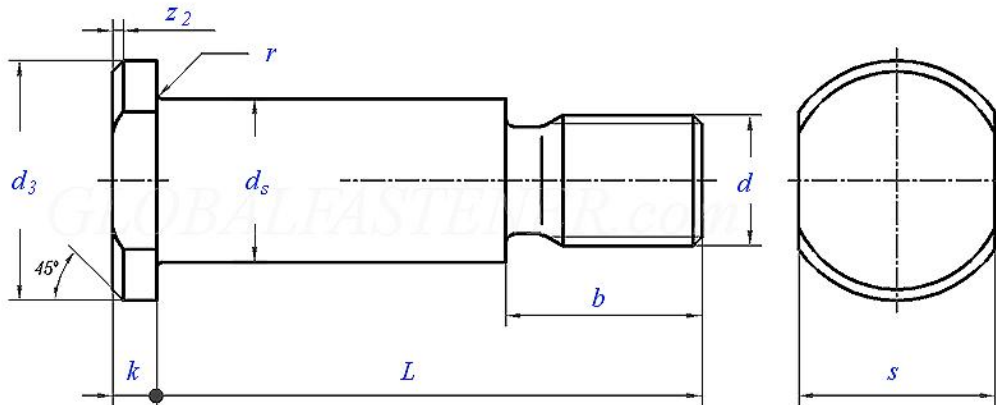
Leader-Fastener is a manufacturer and distributor of **DIN 1445 T Bolts**. We have a complete line of service from having invested in production plants, export department and to having a quality control team and center to meet your requirements. We regard quality as the life of the company. We persist in good quality as the first policy and have established a set of quality control and inspection system according to the international standard. We have carried out ISO9001 Quality Guarantee System in every course of production, transportation and selling. We do hope we could be your partner in business by topping quality, knight service and

competitive price in the near future and be your friends as well.

DIN 1445 Clevis Pins with Head and Stud End

T-Head Bolts, also known as Hammer Head Bolts, T-Slot Bolts and Tank Strap Bolts, have either a Tee or square shaped head. Normally they are installed into a hole with a tee shaped slot so that the head of the bolt can sit flush, and the shape of the bolt resists turning while tightening.

T-slot bolts, as the name suggests, are bolts used in conjunction with T-slots, also known as T-bolts. T-bolts, called hammer bolts in European standards, are made of carbon steel and stainless steel. It can be directly put into the aluminum profile groove, and it can be automatically positioned and locked during the installation process. It is often used in conjunction with the flange nut. It is a standard matching connector when installing corner fittings. It can be customized according to the profile groove width and different series of profiles. Choose to use. T-bolts are movable anchor bolts and are tools that can be used with nuts. It has extremely important uses. It can not only be used as a connection button for certain pipes, but also plays an important role in the installation and connection of certain instruments, and also has extremely important applications in industry. T-bolts are typically used for nuts that mate with T-slots. General Finish: Zinc-plated or nickel-plated or blackened.

DIN 1445 - 2011 Clevis Pins with Head and Threaded Portion


| Size | 8 | 10 | 12 | 14 | 16 | 18 | 20 | 22 | 24 | 27 | 30 | |
|---------|------------------------|-------|-------|-------|-------|-------|-------|-------|-------|-------|-------|-------|
| ds | max | 8 | 10 | 12 | 14 | 16 | 18 | 20 | 22 | 24 | 27 | 30 |
| | min | 7.91 | 9.91 | 11.89 | 13.89 | 15.89 | 17.89 | 19.87 | 21.87 | 23.87 | 26.87 | 29.87 |
| b min | 11 | 14 | 17 | 20 | 20 | 20 | 25 | 25 | 29 | 29 | 36 | |
| d | M6 | M8 | M10 | M12 | M12 | M12 | M16 | M16 | M20 | M20 | M24 | |
| P Pitch | 1 | 1.25 | 1.5 | 1.75 | 1.75 | 1.75 | 2 | 2 | 2.5 | 2.5 | 3 | |
| d3 | max=nominal size (h14) | 14 | 18 | 20 | 22 | 25 | 28 | 30 | 33 | 36 | 40 | 44 |
| | min | 13.57 | 17.57 | 19.48 | 21.48 | 24.48 | 27.48 | 29.48 | 32.38 | 35.38 | 39.38 | 43.38 |
| k | Nominal Size (js14) | 3 | 4 | 4 | 4 | 4.5 | 5 | 5 | 5.5 | 6 | 6 | 8 |
| | max | 3.125 | 4.15 | 4.15 | 4.15 | 4.65 | 5.15 | 5.15 | 5.65 | 6.15 | 6.15 | 8.18 |
| | min | 2.875 | 3.85 | 3.85 | 3.85 | 4.35 | 4.85 | 4.85 | 5.35 | 5.85 | 5.85 | 7.82 |
| r | 0.6 | 0.6 | 0.6 | 0.6 | 0.6 | 1 | 1 | 1 | 1 | 1 | 1 | |
| s | max | 11 | 13 | 17 | 19 | 22 | 24 | 27 | 30 | 32 | 36 | 36 |
| | min | 10.73 | 12.73 | 16.73 | 18.67 | 21.67 | 23.67 | 26.67 | 29.67 | 31.38 | 35.38 | 35.38 |
| z2 ≈ | 1 | 1 | 1.6 | 1.6 | 1.6 | 1.6 | 2 | 2 | 2 | 2 | 2 | |

| Size | 33 | 36 | 40 | 45 | 50 | 55 | 60 | 70 | 80 | 90 | 100 | |
|---------|------------------------|-------|-------|-------|-------|-------|-------|-------|-------|-------|--------|--------|
| ds | max | 33 | 36 | 40 | 45 | 50 | 55 | 60 | 70 | 80 | 90 | 100 |
| | min | 32.84 | 35.84 | 39.84 | 44.84 | 49.84 | 54.81 | 59.81 | 69.81 | 79.81 | 89.78 | 99.78 |
| b min | 36 | 39 | 42 | 45 | 49 | 52 | 58 | 61 | 68 | 78 | 84 | |
| d | M24 | M27 | M30 | M33 | M36 | M39 | M42 | M45 | M52 | M56 | M64 | |
| P Pitch | 3 | 3 | 3.5 | 3.5 | 4 | 4 | 4.5 | 4.5 | 5 | 5.5 | 6 | |
| d3 | max=nominal size (h14) | 47 | 50 | 55 | 60 | 66 | 72 | 78 | 90 | 100 | 110 | 120 |
| | min | 46.38 | 49.38 | 54.26 | 59.26 | 65.26 | 71.26 | 77.26 | 89.13 | 99.13 | 109.13 | 119.13 |

| | | | | | | | | | | | | |
|----------------|---------------------|-------|-------|-------|-------|-------|--------|--------|--------|--------|--------|--------|
| k | Nominal Size (js14) | 8 | 8 | 8 | 9 | 9 | 11 | 12 | 13 | 13 | 13 | 13 |
| | max | 8.18 | 8.18 | 8.18 | 9.18 | 9.18 | 11.215 | 12.215 | 13.215 | 13.215 | 13.215 | 13.215 |
| | min | 7.82 | 7.82 | 7.82 | 8.82 | 8.82 | 10.785 | 11.785 | 12.785 | 12.785 | 12.785 | 12.785 |
| r | | 1 | 1 | 1 | 1 | 1 | 1 | 1 | 1 | 1 | 1 | 1 |
| s | max | 41 | 46 | 50 | 55 | 60 | 65 | 70 | 80 | 90 | 100 | 110 |
| | min | 40.38 | 45.38 | 49.38 | 54.26 | 59.26 | 64.26 | 69.26 | 79.26 | 89.13 | 99.13 | 109.13 |
| z ₂ | ≈ | 2 | 2 | 2 | 2 | 2 | 3 | 3 | 3 | 3 | 3 | 3 |